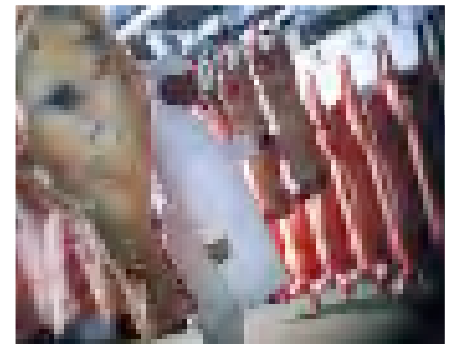


# Robust and Hygienic

## Sliding and Hinged Insulated Chiller and Freezer Doors



### Applications:

- Coldstores
- Food Factories
- Dairies
- Kitchen/Catering Facilities
- Abattoirs

# Dortek Insulated Chiller/Freezer Doors Hinged and Sliding

## About Us

Dortek manufacture, supply and install a range of hygienic doors developed specifically for the Food Industry. With a 35 year manufacturing history, Dortek provide confidence from initial specification through to installation and service.

## Chiller/Freezer Doors

- Sliding and hinged insulated doors for temperatures down to  $-40^{\circ}\text{C}$  finished in white coated food safe or stainless steel sheet for food preparation areas meeting EC/USDA international hygiene standards
- Robust construction with heavy duty rail system and furniture
- Fire resistance up to 1 Hour in accordance with the new European EN 1634-1: 2001 standards
- Manual or automatic operation with safe reliable electric drive units fully compliant to the latest standards

## Dortek Automation

- Micro processor controlled, fully programmable
- In built safety sensor eliminates the need for a safety edge
- Ultra safe, reliable, and quiet
- IP67, 240V /24V low voltage controls
- Malfunction/Service code display
- Opening speed 800mm (0.8m) per sec
- Various methods of door activation, pull cords, infra red, induction loops etc.

## Options

- Various solutions for meat rail palling
- Choice of RAL colours
- Mineral wool core
- Fire resistance up to 1 Hour
- Low voltage frame heating



# Dortek Hygienic Door Systems:

Coldstores  
 Food Factories  
 Dairies  
 Kitchen/Catering Facilities  
 Abattoirs

## Sliding Doors

Unique range of sliding doors for chiller and freezer applications 0°C to -40°C. available in two models and four options. The doorblades are constructed from series of interchangeable panels framed in heavy gauge stainless steel edge profiles.

- 1. Fully assembled for installation**  
simple to install, easy to adjust and commission
- 2. In kit form for easy site assembly and installation**  
cheaper to transport and easier to store safely on site
- 3. In kit form without insulation panels**  
more competitive as panels can be supplied from site off-cuts
- 4. Track furniture and automation only**  
for retro fit or clients who prefer to manufacture their own doorblades

### DT 250 light to medium single leaf chiller and freezer sliding doors

Rail system	type M5 hermetic with stainless steel hangers and nylon bearings
Max Size	2400mm x 2600mm high weight 250 kgs
Doorblade	1.5 mm stainless steel edge frame with high density injected polyurethane panels 80,100,125 or150 thick.
Finishes	white coated polyester, food safe or stainless steel.
Gaskets	tough rubber tubular gasket for perfect sealing
Handles	pull handle and flush grip stainless steel lever handle for doors over 1500mm wide
Frames	100 x 20mm 1.5mm stainless steel face mounted optional wrap round frames
Heating	240 V frame heating with optional heated floor cill



**Insulated Sliding Chiller Door**

### DT 400 heavy duty single/bi-parting chiller and single leaf freezer sliding doors

Rail system	type M7 hermetic with stainless steel hangers and nylon bearings
Max Size	4000mm x 4500mm high weight 400 kgs
Doorblade	2mm stainless steel edge frame with high density injected polyurethane panels 80,100,125,150 or160 thick
Finishes	white coated polyester, food safe or stainless steel
Gaskets	tough rubber tubular gasket for perfect sealing
Handles	stainless steel lever handles
Frames	150 x 45mm white coated face mounted polyurethane injected optional wrap stainless steel round frames
Heating	240 V frame heating with optional heated floor cill



**Insulated Sliding Freezer Door**

### Options

For larger sizes please consult Dortek  
 Various solutions for meat rail passage  
 Fire resistant to 90 minutes in accordance with EN 1634-1:2001  
 Choice of RAL colours  
 Low voltage frame heaters

**Manufacture - Installation - Service**

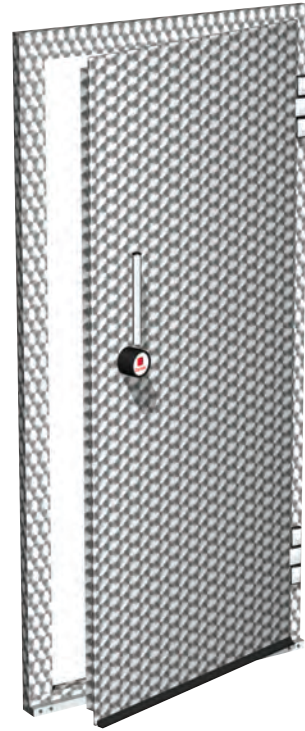
## Hinged Doors

Hinged chiller and freezer doors are available in custom made sizes for temperature range 0° C to -40° C. The doorblades are constructed from steel sheet with a high density injected polyurethane core resulting in excellent insulation properties coupled with robust construction.

**DT 60**      **single or paired door +8° to +25° C**  
 Hinges      stainless steel rising hinges with concealed fixings  
 Max Size    single 1300mm x 2500mm high  
               pairs 2600mm x 2500mm high  
 Doorblade   60mm thick high density injected polyurethane core  
 Finishes     white coated polyester, food safe or stainless steel.  
 Gaskets     tough rubber tubular gasket for perfect sealing  
 Handles     lever handles with euronorm lock/emergency release  
 Frames      45mm x 90mm white coated polyester steel sheet  
               optional stainless steel wrap round frames

**DT 80**    **single or paired chiller door 0° to +25° C**  
 Hinges      stainless steel rising hinges with concealed fixings  
 Max Size    single 1300mm x 3000mm high  
               pairs 2600mm x 3000mm high  
 Doorblade   80mm thick high density injected polyurethane core  
 Finishes     white coated polyester, food safe or stainless steel.  
 Gaskets     tough rubber tubular gasket for perfect sealing  
 Handles     Cam lever ss handle with euronorm lock/emergency release  
 Frames      45mm x 90mm white coated polyester steel sheet  
               optional stainless steel wrap round frames

**DT 120** **single or paired doors -20° to + 25° C**  
**DT 160** **single or paired doors - 40° to + 25° C**  
 Hinges      stainless steel rising hinges with concealed fixings  
 Max Size    single 1300mm x 3000mm high  
               pairs 2600mm x 3000mm high  
 Doorblade   120 or 160mm thick high density injected polyurethane core  
 Finishes     white coated polyester, food safe or stainless steel.  
 Gaskets     tough rubber tubular gasket for perfect sealing  
 Handles     Cam lever ss handle with euronorm lock/emergency release  
 Frames      45mm x 90mm white coated polyester steel sheet  
               optional counter frame for mounting to panels  
 Heating     240 V frame heating with optional heated floor cill



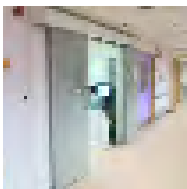
### Options

For larger sizes please consult DorteK  
 Various solutions for meat rail passage  
 Composite mineral wool core (not for temp below -10°C)  
 Choice of RAL colours  
 Low voltage frame heaters

## Other Door Systems from DorteK



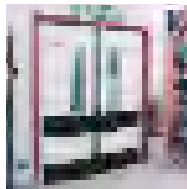
K Type  
Single action doors



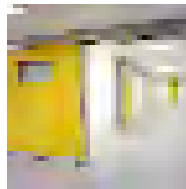
K Type  
Bi-parting  
automatic sliding  
doors



F60 Type  
1 hour fire  
resistant doors



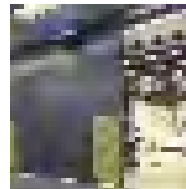
S Type  
Double action  
swing doors



Hermetically  
Sealing



Fast Acting



Acoustic



Gas Door



**DorteK**<sup>®</sup>  
Hygienic door systems

**DorteK Limited, UK**  
 St Mark Street,  
 Hull HU8 7ED England  
 Tel: +44 (0) 1482 226 848  
 Fax: +44 (0) 1482 226 843  
 email: sales@dortek.com

**DorteK Limited, Ireland**  
 North Quay, Wicklow Town,  
 County Wicklow Ireland  
 Tel: +353 (0) 404 67101  
 Fax: +353 (0) 404 67012  
 email: ireland@dortek.com

[www.dortek.com](http://www.dortek.com)