

MF5 Hermetically Sealed Sliding Clean Room Door



MF5 Hermetically Sealed Sliding Clean Room Door

The MF5 hermetically sealing sliding door has been specifically designed for use in pharmaceutical clean rooms, production and packing facilities. Sliding doors require much less valuable space than hinged doors and when operated produce far less air disturbance as they slice through the air. When closed the unique patented track system allows the door to move down/in under its own weight and in conjunction with a continuous neoprene gasket it seals perfectly against the floor and frame. The efficiency of the seal has been officially tested and results show it to be over 99% effective thus reducing cross contamination, dirty air entering the clean room and expensive air handling costs.

The door blade is a strong rigid 60mm thick panel finished with hard plastic laminate and framed with flush anodised aluminium profiles giving a flat smooth easy clean surface. Double glazed flush fitted vision panels are available. A continuous neoprene gasket is fitted around the doors perimeter and a stainless steel lever handle is provided for manual opening.

Double leaf bi-parting doors and 30 minute fire resistant versions officially tested to the latest EU regulations EN 6069:2001 are available.

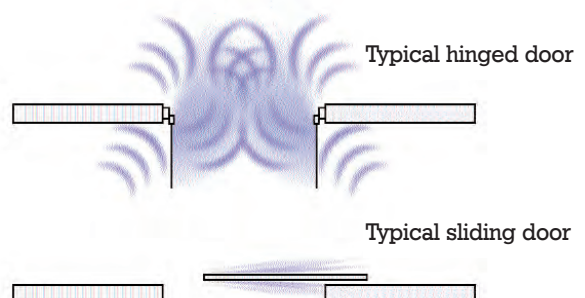
A range of frames to suit particular wall construction and thickness are available in aluminium or stainless steel.

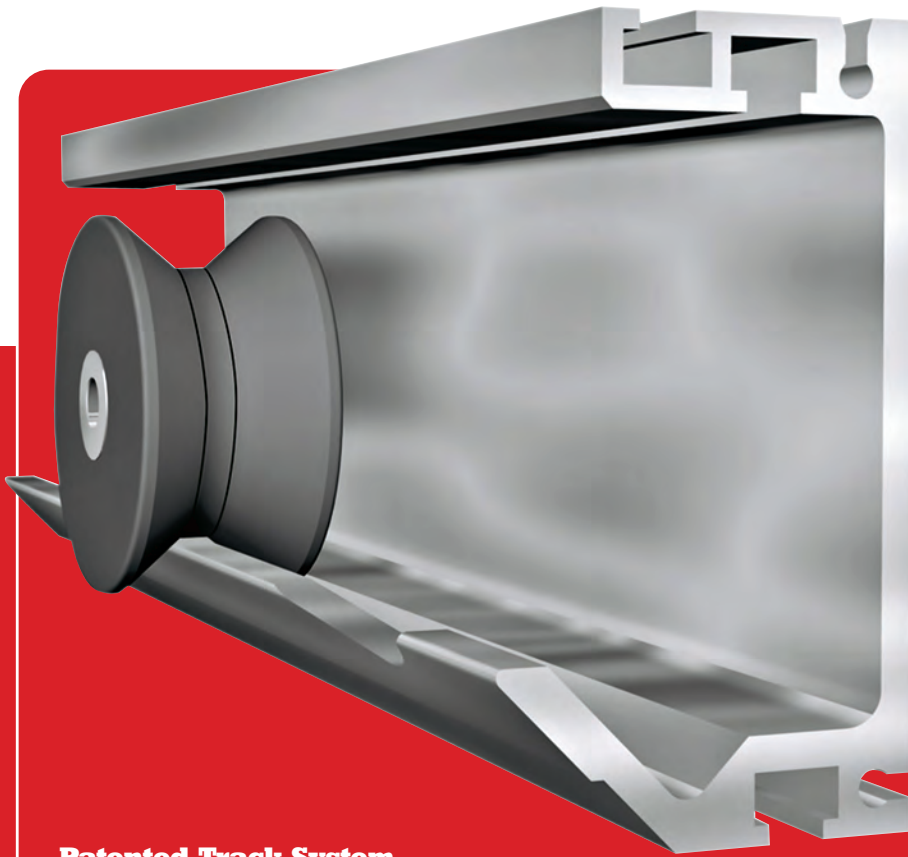
The doors can be automated with the safe reliable SDA-04 electrical operator which has several unique features. The intelligent automation senses if an obstruction is present and prevents the door from closing thus eliminating the need for a dirty safety strip leaving the leading edge clean and ledge free. Additional safety is provided by means of a photo-cell fitted across the door opening. The opening and closing speeds and the time delay closing are easy to adjust and a self-diagnostic coded system makes fault finding simple reducing expensive down time. Doors can be locked or interlocked to suit individual client requirements.



Sliding doors versus hinged doors

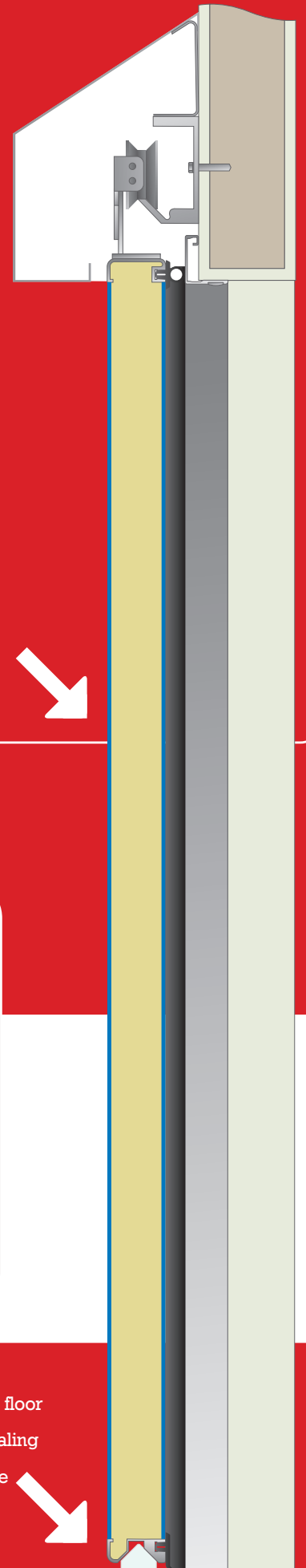
Traditional swing doors create uncontrolled movements of air during opening and closing. This uncontrolled air can accelerate the spread of airborne micro-organisms by air currents and may infect susceptible hosts in operating theatres and isolation wards.





Patented Track System

The unique patented track system is angled at 45 degrees and special indentations allow the bearings to roll down and in enabling the door using its own weight to seal perfectly against the frame and floor.



Key Features on Hermetic Door

- Controls air leakage
- Lower air handling costs
- Reduces cross contamination
- Smooth hygienic surface
- Safe reliable, low maintenance
- No floor track required
- Good sound reduction creates quiet working environment

Automation Points

- Safe reliable operation
- In built safety sensor eliminates the need for a safety edge
- Adjustable opening/closing speeds
- Self diagnostic automation reduces down time
- Hands free operating switches
- Doors can be interlocked to suit clients requirements



Optional touchless sensor

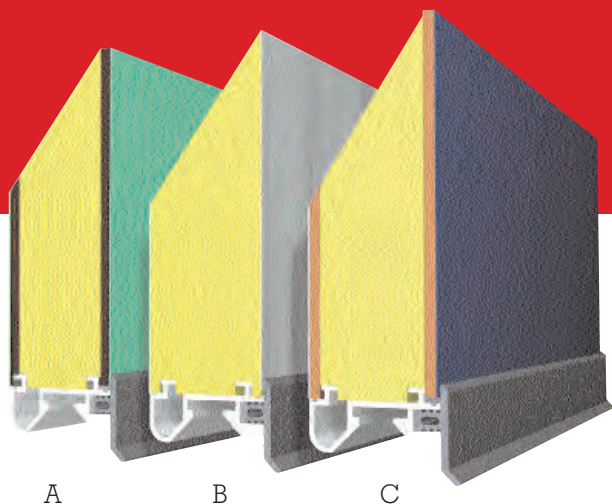
Floor sealing system

A tough neoprene gasket seals perfectly against a level floor without the need for a raised threshold. Guiding and sealing cams are fitted outside the clear opening eliminating the requirement for a floor track, allowing free unrestricted access for wheeled traffic



MF5 Options & Specifications

The surface of the door is completely flush and can be offered in the following finishes.



- A. 6.0mm hard plastic solid laminate
- B. 0.8mm stainless steel
- C. 0.9mm hard plastic laminate on MDF



Architects Specification

- Door:** Single leaf/Bi parting sliding MF-5 with hermetic seal
- Track:** Aluminium rail system with nylon bearings
- Doorblade:** 48 mm PU core faced both sides with 1 mm hard plastic laminate on 5 mm board / 6 mm hard plastic laminate framed in anodised aluminium profiles
- Colour:** From Formica colour range
- Frame:** Aluminium profile/Stainless Steel to suit wall construction
Clear opening mm xmm
- Handles:** Lever handles both sides
- Window:** mm xmm double glazed laminated safety glass
- Sealing:** Rubber 'D' shaped gasket
- Canopy:** White colour coated/stainless/steel sheet
- Operation:** Manual or Electric automation micro processor controlled with safety photo-cell, in built safety sensor and 2 push buttons
- Direction:** Sliding open to the left/right
- Structural opening dimension:** mm xmm

Also available with 30 minute fire resistance & X ray Protection.

Client List

- | | |
|------------------------------|-----------------------------|
| Abbott Laboratories | Merck Sharp Dohme |
| Allergan Pharmaceutical | Napp / Bard Pharmaceuticals |
| AstraZeneca | NHS Trusts |
| Baxter Healthcare | Novartis |
| Boots Contract Manufacturing | Pfizer Limited |
| Bristol Myers Squibb | Reckitt Benckiser |
| Convatec | Sanofi Aventis |
| Eli Lilly & Co | Schering Plough |
| Fujisawa | Smith & Nephew |
| GlaxoSmithKline | Sigma Aldrich |
| Mater Hospital | Teva UK, |
| | Wyeth Laboratories |
| | 3M |



Dortek Limited, UK
St Mark Street,
Hull HU8 7ED England
Tel: +44 (0) 1482 226 848
Fax: +44 (0) 1482 226 843

Dortek/Wenplast Limited, Ireland
North Quay, Wicklow Town,
County Wicklow Ireland
Tel: +353 (0) 404 67101
Fax: +353 (0) 404 67012

Email: sales@dortek.com
www.dortek.com