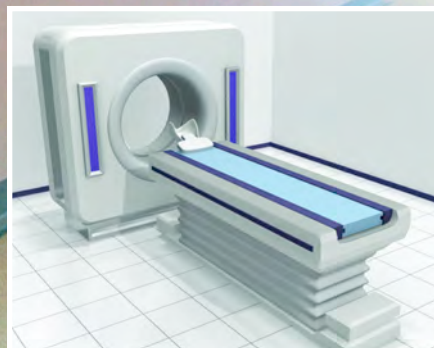


# Medicare Range

## Hygienic Doors for the Healthcare Sector



### Applications:

- Operating Theatres
- Aseptic Suites
- Recovery Rooms
- Isolation Wards
- Pharmacies
- Accident & Emergency
- High Dependency/ICU
- Kitchens
- Mortuaries

- Bacteria Resistant
- Water Resistant
- Fire Resistant
- Impact Resistant



GRP doors in typical Hospital



Operating Theatre in General Hospital, Europe



ICU, Hospital in Ireland



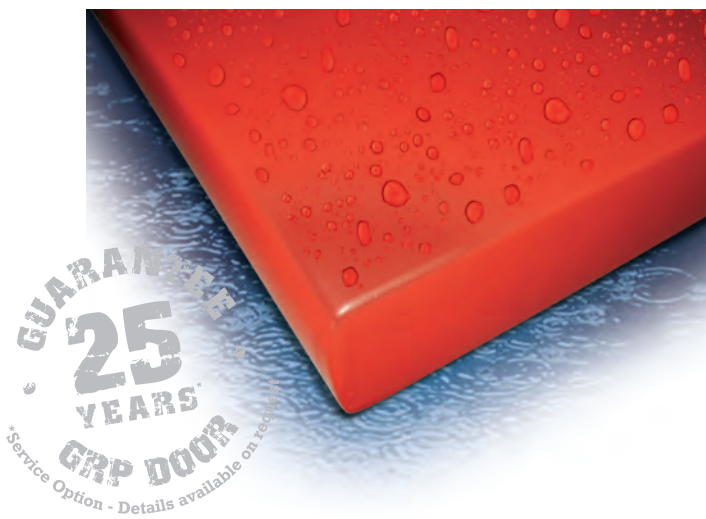
New Pharmacy at major London Hospital



Kitchen in a large Midlands Hospital, UK

## Dortek Hygienic Doors

- Smooth seamless doorblade, which is easy to clean, will not harbour bacteria
- Built in colour, - maintenance free
- Available with antibacterial protection
- Lightweight, strong, durable
- Water resistant – will not warp, swell, rust, or rot.
- Fire resistant up to five hours (patented concealed intumescent strip)
- Available with Microban® anti-bacterial protection



Fire resistance up to 5 hours EN1634 and BS 476 part 22, with patented concealed intumescent strip - maintaining the seamless construction

# Dortek Medicare Door Range for the Healthcare Sector

Today's hospitals require building materials that meet the demands of continuously developing healthcare technology, increasing requirements for hygiene, fire and impact resistance, while minimising operational costs.

An emphasis on low capital cost specification in hospital doors leads to ongoing high maintenance costs and unacceptable compromises on environmental hygiene.

Used by everyone throughout the hospital, doors can be a major source of cross contamination and infection if incorrectly specified.

Dortek's Medicare range of bespoke manufactured door systems can help keep bacterial spread and operating costs to a minimum.

## About Us

Dortek design, manufacture, supply and install a wide range of bespoke hygienic door solutions specifically for the healthcare sector. With a 35 year manufacturing history, Dortek provide confidence from initial specification through to installation and service.

## Wen-plast GRP Doors

- Glass reinforced polyester (GRP) is an extremely tough, durable, clean, water-resistant material used in demanding environments where door performance and hygiene are critical.
- Hinged and sliding seamless moulded GRP doors in a range of built-in standard colours. Easy to clean, ideal in wet areas, requiring little maintenance. Full range of factory-fitted quality door fittings to client's specification.
- Fire resistance of up to 4 hours tested to BS476 Part 22 and latest EU Standard EN1634-1 with patented hygienic concealed intumescent strips maintaining the seamless construction.
- Choice of frames in GRP, stainless steel or aluminium for insulated panels or masonry/steel constructions.
- Manual or automatic operation with safe, reliable electric drive units, fully compliant to the latest standards.

## MF5 Hermetically Sealing Sliding Door

- Controlling air leakage to 99%.
- Space-saving, smooth, quiet operation.
- Manual or automatic.
- Wide range of automations, touchless activation, radar etc. available.
- No dirt-gathering ledges or seams
- Closed cell construction resistant to bacteria and water
- Tough, impact resistant, maintenance-free (never needs painting)
- Automation and touchless sensors



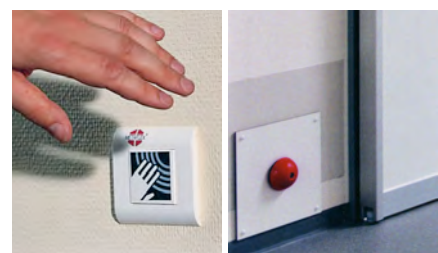
Diagnostic Centre, major UK Hospital



Hospital ward with Dortek doors



Childrens Recovery Room, UK Hospital



Optional touchless sensor and floor kick opener

# The leading global supplier of Hygienic Door Systems

## Hermetic Doors Sliding • Single or pairs

These doors create 99% air seal ensuring better control of air handling systems and reducing cross contamination through air flow.

## Fire Doors Hinged or sliding • Single or pairs

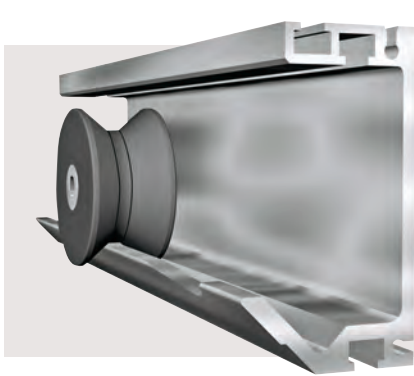
Tested to BS 476 part 22 and EN 1634 and used to create fire breaks and escape routes these doors combine safety without compromising the high standard of hygiene demanded in healthcare facilities.

## Automated Doors Sliding • Single or pairs

Automations are an essential part in fighting the spread of hospital infections by eliminating the need to touch doors. All our range of doors can be automated with safe reliable operators activated by infra red or touch less sensors.

## X-Ray Doors Sliding • Single or pairs

Single sliding and single action doors can be provided with lead protection to meet your X-ray requirements.



### MF5 Hermetic Sliding Door

- 99% air seal
- Fire Resistant up to 60 min
- Patented track system



## Hermetic Track System

The unique patented track system is angled at 45 degrees and special indentations allow the bearings to roll *down* and *in* enabling the door using its own weight to seal perfectly against the frame and floor.

## 'F TYPE' Fire Doors

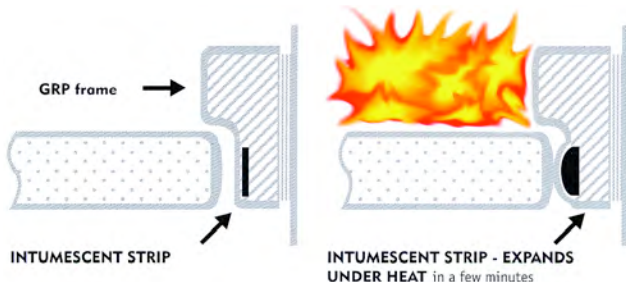
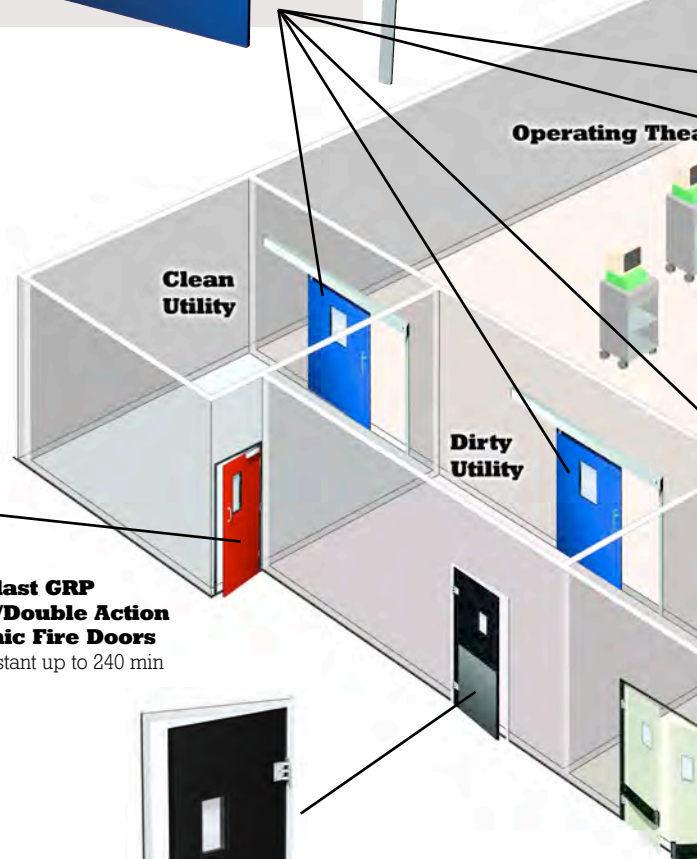
Hinged or sliding • Single or pairs

- GRP seamless moulded - no ledges or seams - 40 mm thick
- GRP frames with patented concealed intumescent strip
- Integral colour
- Up to 5 hours fire resistance  
Tested to EN1634  
Tested to BS 476 part 22
- Wide range of factory fitted ironmongery, vision panels and protection
- Manual or automatic



### Wen-plast GRP Single/Double Action Hygienic Fire Doors

Fire resistant up to 240 min



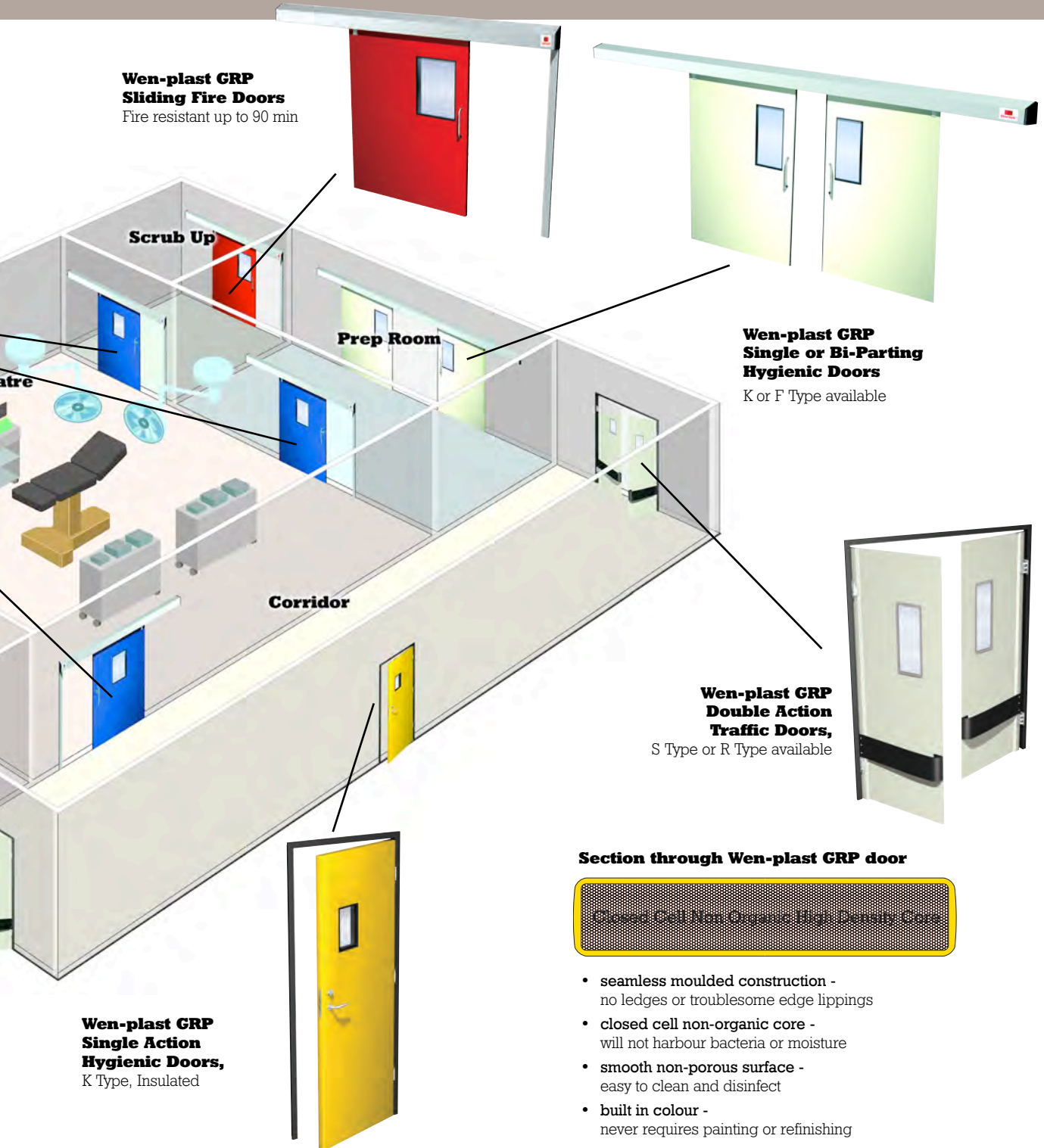
Dortek patented concealed intumescent strip



### Wen-plast GRP Double Action Hygienic Doors

K type, Insulated

Operating Theatres  
 Aseptic Suites  
 Recovery Rooms  
 Isolation Wards  
 Pharmacies  
 Accident & Emergency  
 High Dependency/ICU  
 Kitchens  
 Mortuaries



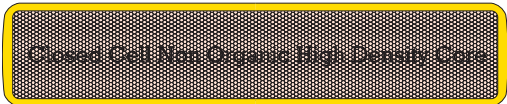
**Wen-plast GRP Sliding Fire Doors**  
 Fire resistant up to 90 min

**Wen-plast GRP Single or Bi-Parting Hygienic Doors**  
 K or F Type available

**Wen-plast GRP Double Action Traffic Doors,**  
 S Type or R Type available

**Wen-plast GRP Single Action Hygienic Doors,**  
 K Type, Insulated

**Section through Wen-plast GRP door**



- seamless moulded construction - no ledges or troublesome edge lippings
- closed cell non-organic core - will not harbour bacteria or moisture
- smooth non-porous surface - easy to clean and disinfect
- built in colour - never requires painting or refinishing

**Seamless Hygienic Performance**

# Other door systems from DorteK



Chill/Freezer



Fast Acting



Gas Tight



Acoustic

## Frame Options

- GRP frame
- Fire rated GRP frame with patented concealed intumescent strip
- Various stainless steel frames
- Aluminium wrap-around frame for wall panels



GRP frame



Wrap around aluminium or stainless steel frames

## Installation & Service

All installations and service calls are carried out by our own fully trained engineers.

Service contract details are available on request



**Mobile Exhibition Vehicle. With full working models of our hygienic door systems. Available for CPD presentations and site visits. Contact DorteK to arrange a booking.**



St Mark Street,  
Hull HU8 7ED England  
Tel: +44 (0) 1482 226 848  
Fax: +44 (0) 1482 226 843  
email: [sales@dortek.com](mailto:sales@dortek.com)

### Wen-plast/DorteK, Ireland

North Quay, Wicklow Town,  
County Wicklow Ireland  
Tel: +353 (0) 404 67101  
Fax: +353 (0) 404 67012  
email: [ireland@dortek.com](mailto:ireland@dortek.com)

**[www.dortek.com](http://www.dortek.com)**

