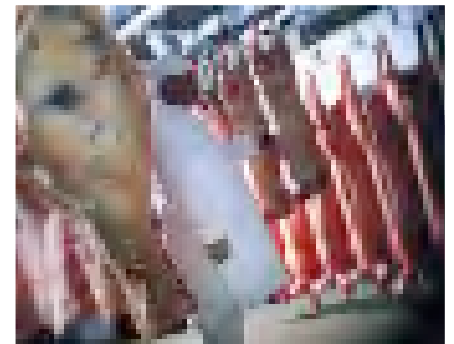


Robust and Hygienic

Sliding and Hinged Insulated Chiller and Freezer Doors



Applications:

- Coldstores
- Food Factories
- Dairies
- Kitchen/Catering Facilities
- Abattoirs

Dortek Insulated Chiller/Freezer Doors Hinged and Sliding

About Us

Dortek manufacture, supply and install a range of hygienic doors developed specifically for the Food Industry. With a 35 year manufacturing history, Dortek provide confidence from initial specification through to installation and service.

Chiller/Freezer Doors

- Sliding and hinged insulated doors for temperatures down to -40°C finished in white coated food safe or stainless steel sheet for food preparation areas meeting EC/USDA international hygiene standards
- Robust construction with heavy duty rail system and furniture
- Fire resistance up to 1 Hour in accordance with the new European EN 1634-1: 2001 standards
- Manual or automatic operation with safe reliable electric drive units fully compliant to the latest standards

Dortek Automation

- Micro processor controlled, fully programmable
- In built safety sensor eliminates the need for a safety edge
- Ultra safe, reliable, and quiet
- IP67, 240V /24V low voltage controls
- Malfunction/Service code display
- Opening speed 800mm (0.8m) per sec
- Various methods of door activation, pull cords, infra red, induction loops etc.

Options

- Various solutions for meat rail palling
- Choice of RAL colours
- Mineral wool core
- Fire resistance up to 1 Hour
- Low voltage frame heating



Dortek Hygienic Door Systems:

Coldstores
 Food Factories
 Dairies
 Kitchen/Catering Facilities
 Abattoirs

Sliding Doors

Unique range of sliding doors for chiller and freezer applications 0°C to -40°C. available in two models and four options. The doorblades are constructed from series of interchangeable panels framed in heavy gauge stainless steel edge profiles.

- 1. Fully assembled for installation**
simple to install, easy to adjust and commission
- 2. In kit form for easy site assembly and installation**
cheaper to transport and easier to store safely on site
- 3. In kit form without insulation panels**
more competitive as panels can be supplied from site off-cuts
- 4. Track furniture and automation only**
for retro fit or clients who prefer to manufacture their own doorblades

DT 250 light to medium single leaf chiller and freezer sliding doors

Rail system	type M5 hermetic with stainless steel hangers and nylon bearings
Max Size	2400mm x 2600mm high weight 250 kgs
Doorblade	1.5 mm stainless steel edge frame with high density injected polyurethane panels 80,100,125 or150 thick.
Finishes	white coated polyester, food safe or stainless steel.
Gaskets	tough rubber tubular gasket for perfect sealing
Handles	pull handle and flush grip stainless steel lever handle for doors over 1500mm wide
Frames	100 x 20mm 1.5mm stainless steel face mounted optional wrap round frames
Heating	240 V frame heating with optional heated floor cill

DT 400 heavy duty single/bi-parting chiller and single leaf freezer sliding doors

Rail system	type M7 hermetic with stainless steel hangers and nylon bearings
Max Size	4000mm x 4500mm high weight 400 kgs
Doorblade	2mm stainless steel edge frame with high density injected polyurethane panels 80,100,125,150 or160 thick
Finishes	white coated polyester, food safe or stainless steel
Gaskets	tough rubber tubular gasket for perfect sealing
Handles	stainless steel lever handles
Frames	150 x 45mm white coated face mounted polyurethane injected optional wrap stainless steel round frames
Heating	240 V frame heating with optional heated floor cill

Options

For larger sizes please consult Dortek
 Various solutions for meat rail passage
 Fire resistant to 90 minutes in accordance with EN 1634-1:2001
 Choice of RAL colours
 Low voltage frame heaters



Insulated Sliding Chiller Door



Insulated Sliding Freezer Door

Manufacture - Installation - Service

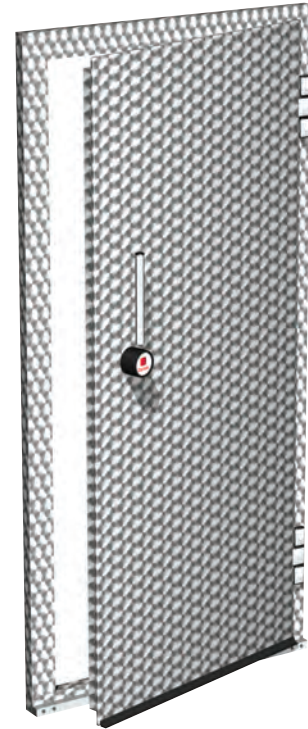
Hinged Doors

Hinged chiller and freezer doors are available in custom made sizes for temperature range 0° C to -40° C. The doorblades are constructed from steel sheet with a high density injected polyurethane core resulting in excellent insulation properties coupled with robust construction.

DT 60 **single or paired door +8° to +25° C**
 Hinges stainless steel rising hinges with concealed fixings
 Max Size single 1300mm x 2500mm high
 pairs 2600mm x 2500mm high
 Doorblade 60mm thick high density injected polyurethane core
 Finishes white coated polyester, food safe or stainless steel.
 Gaskets tough rubber tubular gasket for perfect sealing
 Handles lever handles with euronorm lock/emergency release
 Frames 45mm x 90mm white coated polyester steel sheet
 optional stainless steel wrap round frames

DT 80 **single or paired chiller door 0° to +25° C**
 Hinges stainless steel rising hinges with concealed fixings
 Max Size single 1300mm x 3000mm high
 pairs 2600mm x 3000mm high
 Doorblade 80mm thick high density injected polyurethane core
 Finishes white coated polyester, food safe or stainless steel.
 Gaskets tough rubber tubular gasket for perfect sealing
 Handles Cam lever ss handle with euronorm lock/emergency release
 Frames 45mm x 90mm white coated polyester steel sheet
 optional stainless steel wrap round frames

DT 120 **single or paired doors -20° to + 25° C**
DT 160 **single or paired doors - 40° to + 25° C**
 Hinges stainless steel rising hinges with concealed fixings
 Max Size single 1300mm x 3000mm high
 pairs 2600mm x 3000mm high
 Doorblade 120 or 160mm thick high density injected polyurethane core
 Finishes white coated polyester, food safe or stainless steel.
 Gaskets tough rubber tubular gasket for perfect sealing
 Handles Cam lever ss handle with euronorm lock/emergency release
 Frames 45mm x 90mm white coated polyester steel sheet
 optional counter frame for mounting to panels
 Heating 240 V frame heating with optional heated floor cill



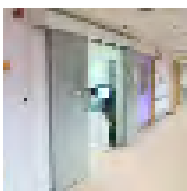
Options

For larger sizes please consult DorteK
 Various solutions for meat rail passage
 Composite mineral wool core (not for temp below -10°C)
 Choice of RAL colours
 Low voltage frame heaters

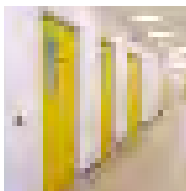
Other Door Systems from DorteK



K Type
Single action doors



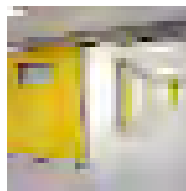
K Type
Bi-parting
automatic sliding
doors



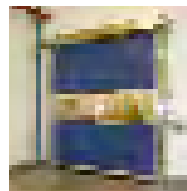
F60 Type
1 hour fire
resistant doors



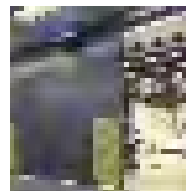
S Type
Double action
swing doors



Hermetically
Sealing



Fast Acting



Acoustic



Gas Door



DorteK®
Hygienic door systems

DorteK Limited, UK
 St Mark Street,
 Hull HU8 7ED England
 Tel: +44 (0) 1482 226 848
 Fax: +44 (0) 1482 226 843
 email: sales@dortek.com

DorteK Limited, Ireland
 North Quay, Wicklow Town,
 County Wicklow Ireland
 Tel: +353 (0) 404 67101
 Fax: +353 (0) 404 67012
 email: ireland@dortek.com

www.dortek.com